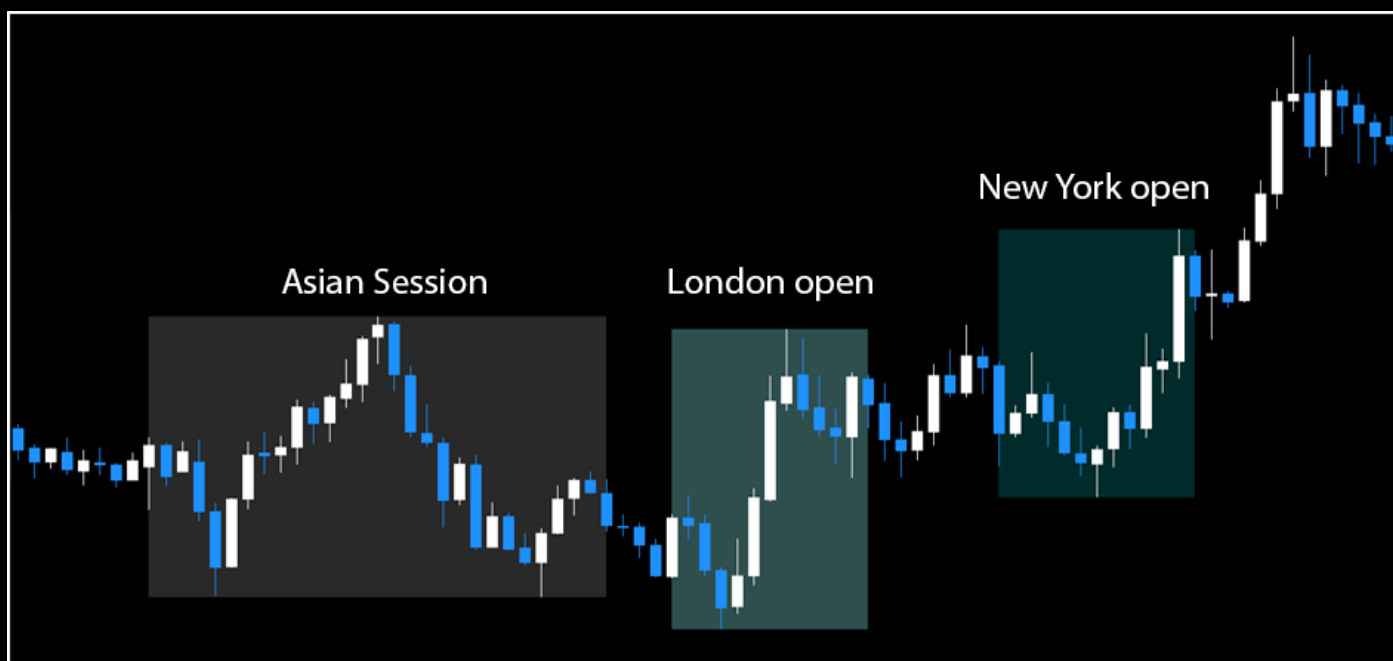


What are Kill Zones?

All ICT students know that certain times of the day are more likely to offer up great trade opportunities. ICT named these times the 'Kill Zones' – they occur in the London and New York open sessions.



ICT specified these daily session times:

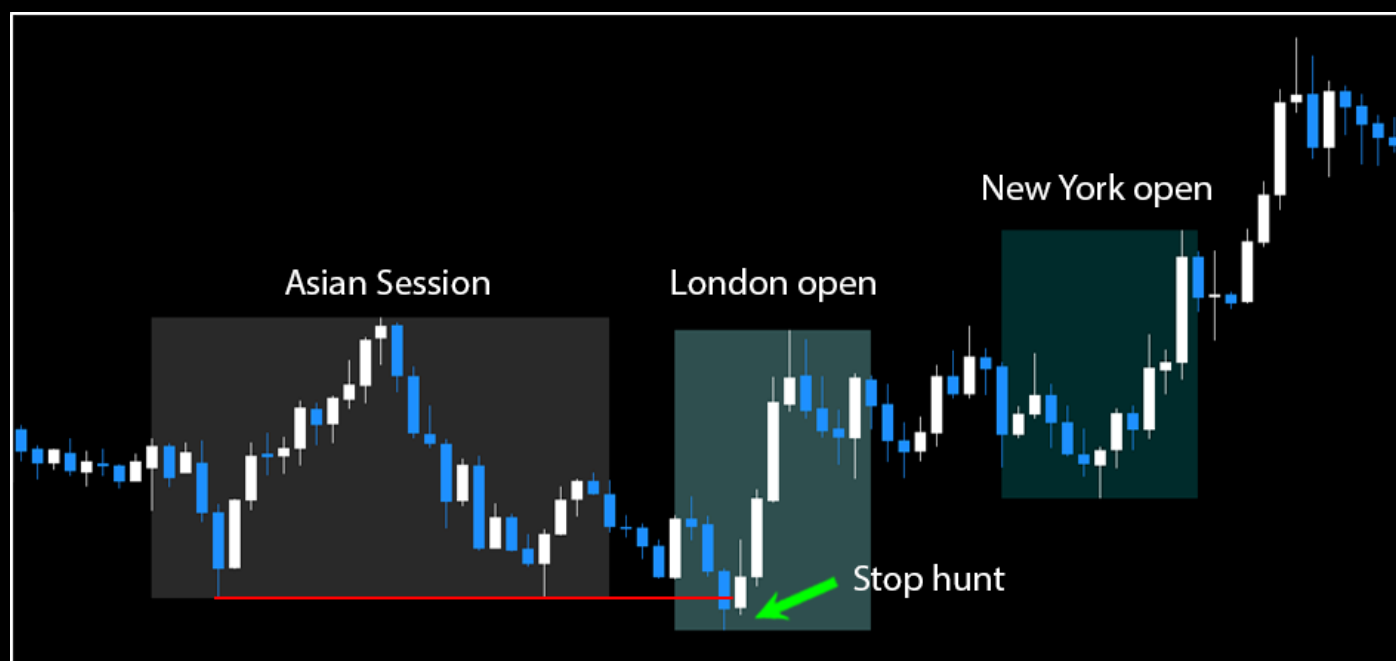
- Asian Session 6pm to midnight
- London Open 2am to 5am
- New York Open 7am to 10am

(Note: ALL times nominated for this indicator are in NEW YORK time)

These session times are highlighted on the chart, making it easier for you to spot potential trade setups in these important 'kill zones'.

So what are we looking for in these times? Predominately we are looking for the smart money to take 'liquidity pools' located at previous swing-points (usually in the previous session) to fuel their intended moves for the day.

IE: If you had a daily bias for a particular instrument to be bullish (after your higher timeframe analysis), you would probably be looking for a bearish 'stop hunt' in the London open session:



This is exactly what happened on this day. Notice that price made equal lows in the Asian session, then came back to 'raid' the liquidity placed there (in the form of bullish traders stops & bearish traders pending 'break out' orders) in the London open.

Once this liquidity was taken you can see that the 'smart money' stepped in with large bullish orders, driving the price up quickly...



**For Free Forex EA, Indicators and more Visit
ForeXCracked.com**

Join Our Telegram Group Chat To Discuss Further About These.

>>>> <https://t.me/fxcracked>

Free trading system, Reviews of Brokers, EA and more.

>>>> <https://www.fxcracked.com>

Our forum

>>>> <https://www.JustForForex.com>

Our Discord Channel

>>>> <https://discord.gg/43P5CRk>

Reliable and Trusted FOREX VPS

>>>> <https://fxvm.net/>

Our Trusted Broker List

>>>> <http://bit.ly/Trusted-Brokers>

	Min Deposit of 5\$ Allow Cent Account Levergae up to 1:888	Register
	Min Deposit of 20\$ Allow USA Traders Levergae up to 1:500	Register

Trusted Forex Signals

	 trade_with_sam Earn While Learn ★★★★★ 5.0 (41 reviews)	FOREX SIGNALS 600 to 800 Pips Weekly 90% Accurate
--	---	--

Free 30\$ No Deposit Forex Bonus

Get your \$30 Trading Bonus*	 
<small>*T&Cs apply. Forex and CFD trading is high risk and can result in the loss of all your invested capital.</small>	Open an Account

After the large bullish move in the London open, price moved into consolidation for a few hours. Let's study this chart again to see what occurred in the New York 'Kill Zone':



Price had made some equal lows in the time it consolidated (engineered liquidity) then in the New York open price came back and once again raided that liquidity pool, then began to run bullish again for the rest of the day.

If you look closely you'll see that price also made a set of 'triple' highs in the Asian and London sessions (more engineered liquidity) running through them in the New York session.

Note: These types of setups will not occur all the time, but having these important 'Kill Zones' highlighted on the M15 chart will allow you to spot these 'perfect' types of setups when they do occur.

Kill Zones

This indicator plots these important 'Kill Zones' visually on the chart, enabling you to better understand the price action and recognize if there is any ICT type framework to trade.

This indicator is predominately designed to be viewed on the M15 chart, but it can also be helpful on the M5, M30 or H1 charts:



Indicator Features:

- Highlights the Asian Session, London open & New York open (Kill Zones)
- Highlights New York midnight open time (12am)
- Highlights New York 8:30am News time
- Highlights New York Stock Exchange (NYSE) 9:30am open
- Automatically adjusts to your time zone
- Uses New York time for all indicator time entries
- Local Time Converter
 - Displays your local (computer) time on every candle (via candle hover window)
 - Displays New York time on every candle (via candle hover window)

Function Notes:

- Designed for use on the M15 chart (also useful on the M5, M30, H1 charts)
- This indicator uses NEW YORK TIME only for all time inputs
- You are able to adjust the times of the Asian, London & New York session highlight boxes to your own preferences
- Local Time Converter - Hover your mouse at the top left of any candle (or wick) to trigger the 'candle hover window' to show your local time & New York time on that candle
- The indicator synchronises to your computer time to generate the 'local time converter'
- You can choose to turn on/off any session box or New York 'time' highlight line

Input Tab:

Variable	Value
NOTE: "Use New York Time for All Time Settings"	
=== Asian Range ===	
Show Asian Range	true
Box Type	Filled
Box Color	DimGray
Asian Range Open	18:00
Asian Range Close	0:00
=== London Kill Zone ===	
Show London Kill Zone	true
Box Type	Filled
Box Color	Tan
London Kill Zone Open	2:00
London Kill Zone Close	5:00
=== New York Kill Zone ===	
Show New York Kill Zone	true
Box Type	Filled
Box Color	RosyBrown
New York Kill Zone Open	7:00
New York Kill Zone Close	10:00
=== New York Highlight Times ===	
Show New York Midnight Open Line	true
Line Style	Dashdot
Line Color	Yellow
Show New York 8:30 News Line	true
Line Style	Dot
Line Color	Yellow
Show New York 9:30 NYSE Open Line	true
Line Style	Dashdotdot
Line Color	Yellow
=== Local Time Converter ===	
Show Local Time Converter	true

Load
Save

OK
Cancel
Reset

- ===== Asian Range =====
- **Show Asian Range** – Choose to highlight the Asian range box
- **Box Type** - Choose box outline or filled color box
- **Box Color** - Select the color of your choice

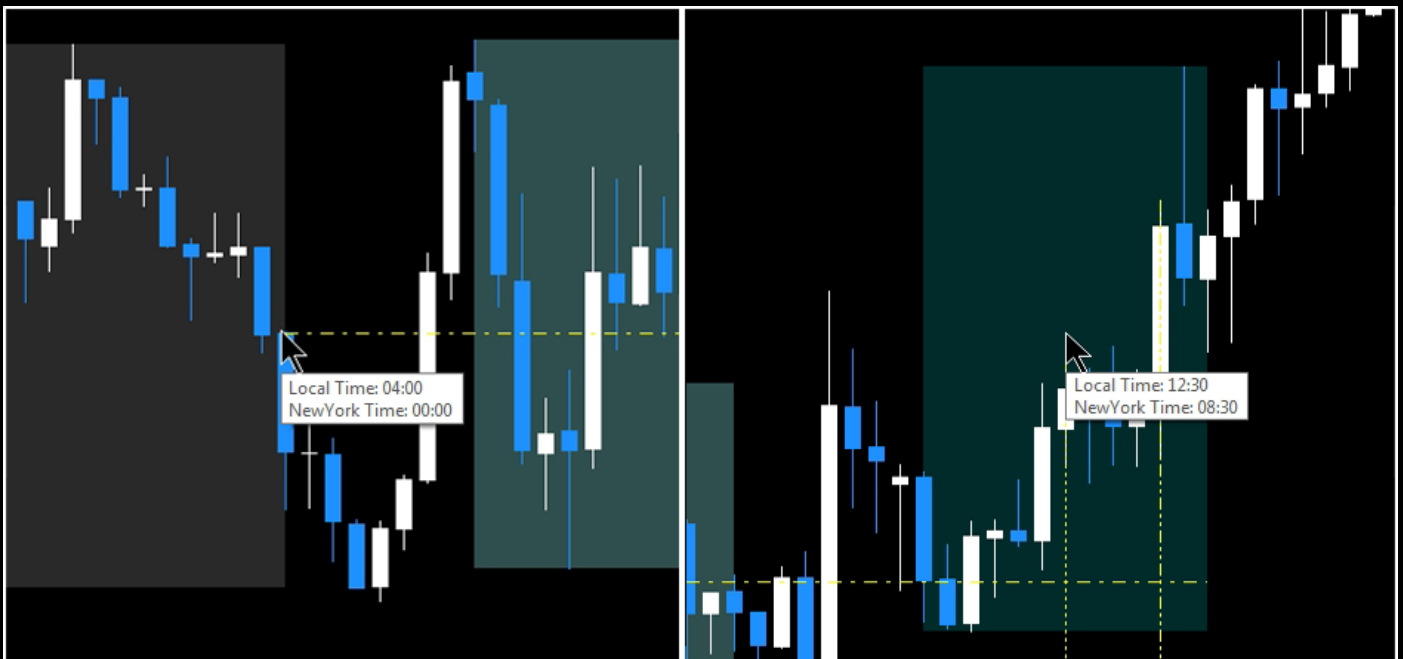
- **Asian Range Open** – Select the Asian range open time (Use New York time for all time settings)
- **Asian Range Close** – Select the Asian range close time (Use New York time for all time settings)
- **==== London Kill Zone ====**
- **Show London Kill Zone** – select true or false to show the London open box
- **Box Type** - Choose box outline or filled color box
- **Box Color** - Select the color of your choice
- **London Kill Zone Open** – Select the London open time (Use New York time for all time settings)
- **London Kill Zone Close** – Select the London close time (Use New York time for all time settings)
- **==== New York Kill Zone ====**
- **Show New York Kill Zone** – select true or false to show the New York open box
- **Box Type** - Choose box outline or filled color box
- **Box Color** - Select the color of your choice
- **New York Kill Zone Open** – Select the New York open time (Use New York time for all time settings)
- **New York Kill Zone Close** – Select the New York close time (Use New York time for all time settings)
- **==== New York Highlight Times ====**
- **Show New York Midnight Open Line** – Select true or false
- **Line Style** – Select the style of the line (solid, dot, etc)
- **Line Color** – Select the color of your choice
- **Show New York 8:30 News Line** – Select true or false
- **Line Style** – Select the style of the line (solid, dot, etc)
- **Line Color** – Select the color of your choice
- **Show New York 9:30 NYSE Open Line** – Select true or false
- **Line Style** – Select the style of the line (solid, dot, etc)
- **Line Color** – Select the color of your choice
- **==== Local Time Converter ====**
- **Show Local Time Converter** – Select true or false (to turn candle hover window on or off)

Display Options:

Local Time Converter

The built in local time converter displays your local (computer) time on any candle. The indicator synchronises to your computer time to generate the local time converter 'hover window' (this helps you to confirm/compare your local time to both your broker and New York time).

- To view your local time - Hover your mouse at the top left of any candle (or wick) to trigger the 'candle hover window' to show your local time (& New York time) on that candle



In the picture above you can see the local time converter 'hover window' in action:

- The pic on the left shows the local time at the New York midnight candle
- The pic on the right shows the local time at the 8:30am New York candle

New York Highlight Times



The 'Kill Zones' indicator will place perforated yellow lines on the M15 chart to highlight:

- **New York Midnight Open time** – a yellow line that runs horizontally from the New York midnight (12am) candle to the end of the New York open session
- **8:30am New York NEWS time** – a yellow line that runs down vertically from the New York 8:30am candle (a high probability trade setup opportunity because of important economic news released at that time)
- **9:30am New York Stock Exchange (NYSE) open time** - a yellow line that runs down vertically from the New York 9:30am candle (the NYSE open that can cause large moves in the US based indices)

The New York Midnight Open:

ICT has always breached the benefit of highlighting the New York 'midnight open' time on your charts. **Note: Trade setups that utilize this New York 'midnight open' time are predominately USA based Indexes and USD currencies.**



The 'Kill Zones' indicator will place perforated yellow lines on the M15 chart to highlight:

- NY Midnight Open – a yellow line that runs horizontally from the NY midnight candle to the end of the New York open session
- 8:30am NY time – a yellow line that runs down vertically from the NY 8:30am candle

Bearish New York 'Midnight Open' trade setup (vice versa for bullish):

- Bearish Daily Expectation
- Market rallies above the NY Midnight Open price at 8.30am (New York time)
- Price takes internal liquidity above old highs, then runs bearish

IE: If you are expecting bearish movement today, price will probably rally ABOVE the **midnight open price** at **8.30 am New York time**:



In the picture above you can see that price ran above the New York 'midnight open' price (to take internal liquidity) then it began to run bearish for the rest of the day.

A couple of things to note:

- These types of setups will not occur all the time, but having these important 'New York times' highlighted on the M15 chart will assist you to spot these setups when they do occur
- If this trade setup occurs it will not always be exactly at 8:30am New York time (it can occur at any time within the New York open session)
- The 9:30am highlight line is predominately for use with USA based Indices, and will not usually affect currency pairs as much