

PLEASE DO NOT PLACE TRADES BEFORE READING THIS MANUAL



**SS7 TRADER®**  
The Binary Expert



# NEXUS 6.0

No Lag! No Repaint!

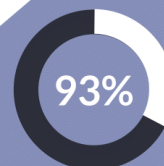
24/7 Non-Stop Signals  
Now Available for 1 Month Rent  
Life Time License  
Free Signal Alert  
Multiple Assest

📍 PAKISTAN

✉ [cybercodeacademy@gmail.com](mailto:cybercodeacademy@gmail.com)

☎ 00923034159543

📺 [www.youtube.com/ss7trader](http://www.youtube.com/ss7trader)



Accuracy

Accuracy Based on Market Conditions.



Binary Options



Major Pairs Only



Make Profits

UP/DOWN

# **NAXUS 6.0 INDICATOR INSTRUCTION MANUAL**

## **Installing Meta Trader 4:**

You can download Meta Trader 4, free of charge, directly from our website. If you haven't done so already, here is the link.

**[Download now](#)**

After downloading the software, you must install it. Right-click on the icon of the downloaded file and select Extract here. If there is no such option, we need to download WinRAR. Then, open the created folder and run the program by double clicking on the file Terminal.exe.

## **Opening an account in MT4**

To start using MT4, you need to first create an account. This is done after running the program for the first time.

- Run the program Meta Trader 4
- Click on File, in the upper left corner and then go to "Open an Account."
- The program will automatically redirect us to ironfx.com
- This page is used for registration.
- We will receive user credentials by email (password and username)
- We will use them when starting MT4

If you have downloaded the software elsewhere, it's possible that the installation process might slightly differ - take it into account.

If you get stuck during installation, review the following instructions (and the comments, where people usually deal with similar issues)

## **[Part 2: Meta Trader 4 Show - How to install the MT4?](#)**

Welcome to the second part of our show about the program Meta Trader 4. If you do not know what that is, I suggest you first read this article. MT4...

# NAXUS 6.0 INDICATOR INSTRUCTION MANUAL

## Installing the strategy in Meta Trader 4

Nexus 6.0 is downloaded as a .rar archive - you know that already, since you're reading this manual, which was a part of the archive. The archive also includes a folder with indicators and templates. However, how do you insert and use them in MT4? Read on.

- Extract the archive (right click, Extract here)
- For extracting the .rar archive file you must have to install the “Winrar”
- The archive contains this manual + 2 folders - Templates and Indicators
- In the program **Meta Trader 4**, click on the File, in the menu and then Open

Data Folder

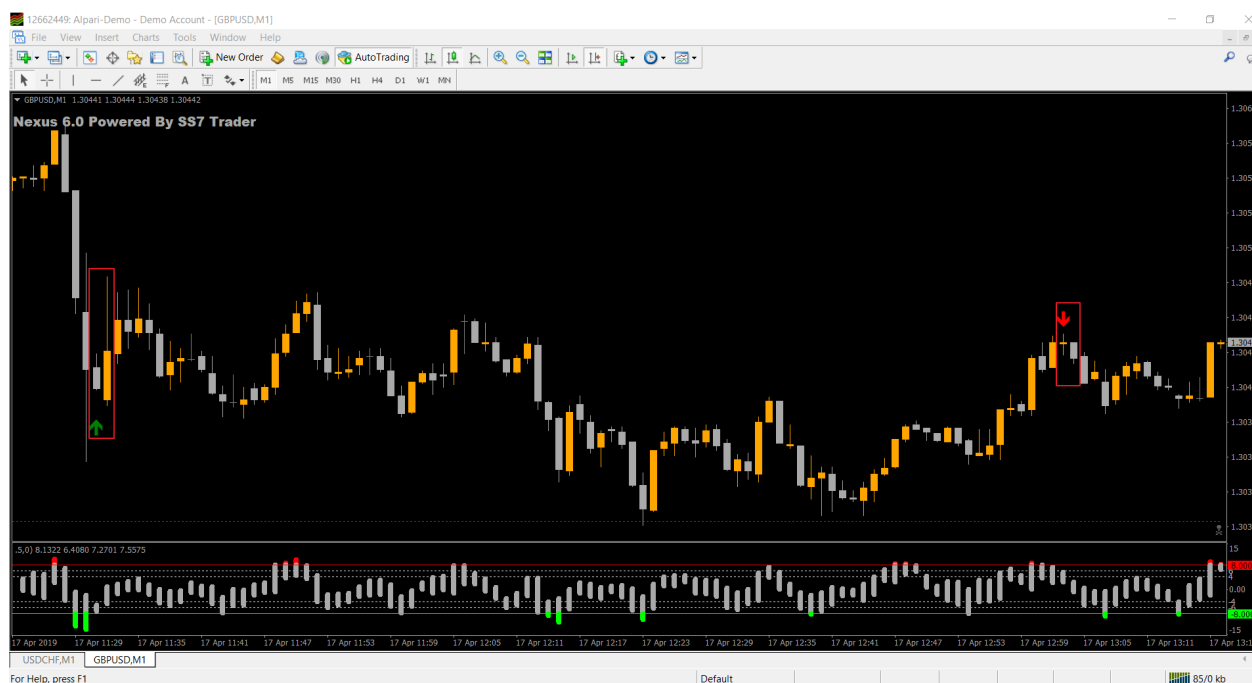
- A folder will open up, called something like this  
50CA3DFB520CC1A8F28Bj44D1BF2A5702
- Open the folder Templates and copy the entire content of the downloaded folder - Templates inside of it.
- Go back and this time, open the folder MQL4> Indicators, here, copy the entire contents of the downloaded folder - Indicators.
- Close MT4, wait a bit and run it again.
- Open a new chart, for example EUR/USD
- Click anywhere on an empty space in the chart Template; And select **Nexus 6.0**

# NAXUS 6.0 INDICATOR INSTRUCTION MANUAL

## How to use the (NEXUS 6.0 INDICATOR)

### 1 Minute Timeframe & 1 Minute Expiry

On the picture below, you will see how the strategy is supposed to look like, after it has been installed. Have a look at it, and I will explain everything further below



As you can see, the fundamental element of the strategy is the arrow. This type of arrow appears if all the analytical conditions are met. Here you can see only two

# NAXUS 6.0 INDICATOR INSTRUCTION MANUAL

highlighted candles, One where you can see the arrow appear and 2nd after the arrow where you need to execute your trade. That's the simple thing you need to see the arrow and place a trade on next candle.

## 5 Minute Timeframe & 5 Minute Expiry

Let's come to another scenario.



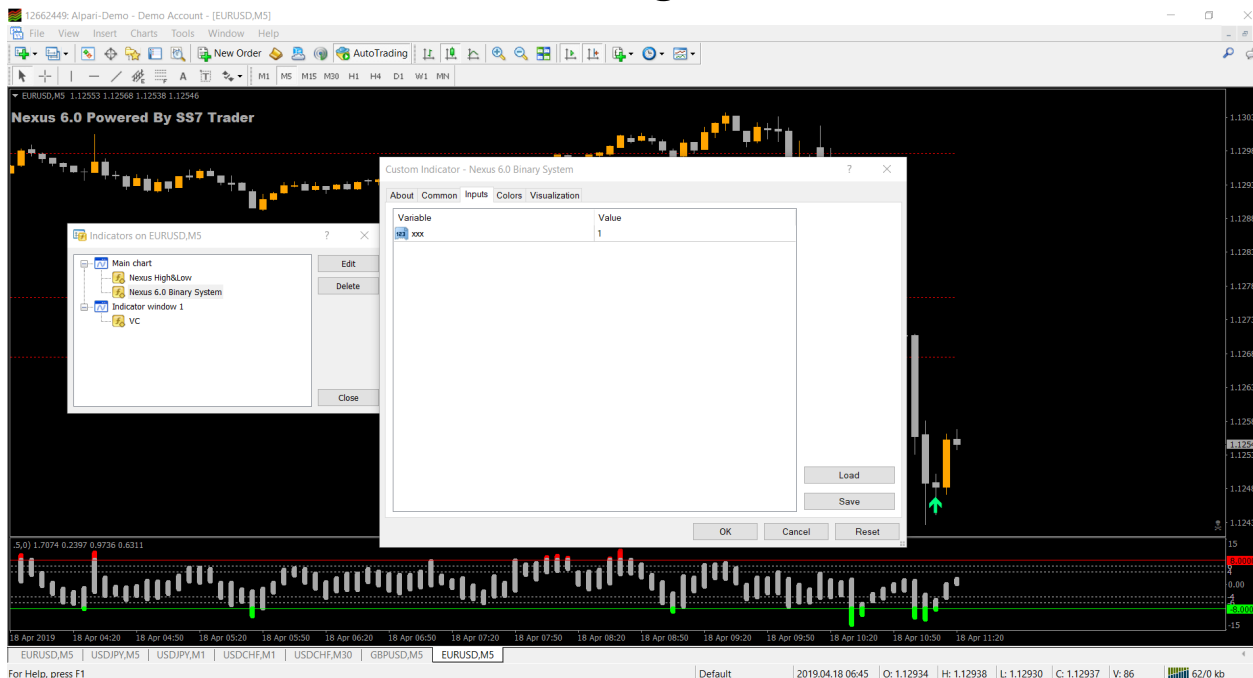
Here you can see again 2 highlighted candles 1<sup>st</sup> one where the arrow appears and second where you need to execute the trade on 5 minute expiry. Remember that we use 5 min timeframe that's why we trade on 5 minute expiry.

Same thing goes on all timeframes  
means if your timeframe is 15 mins then  
expiry also is 15 mins

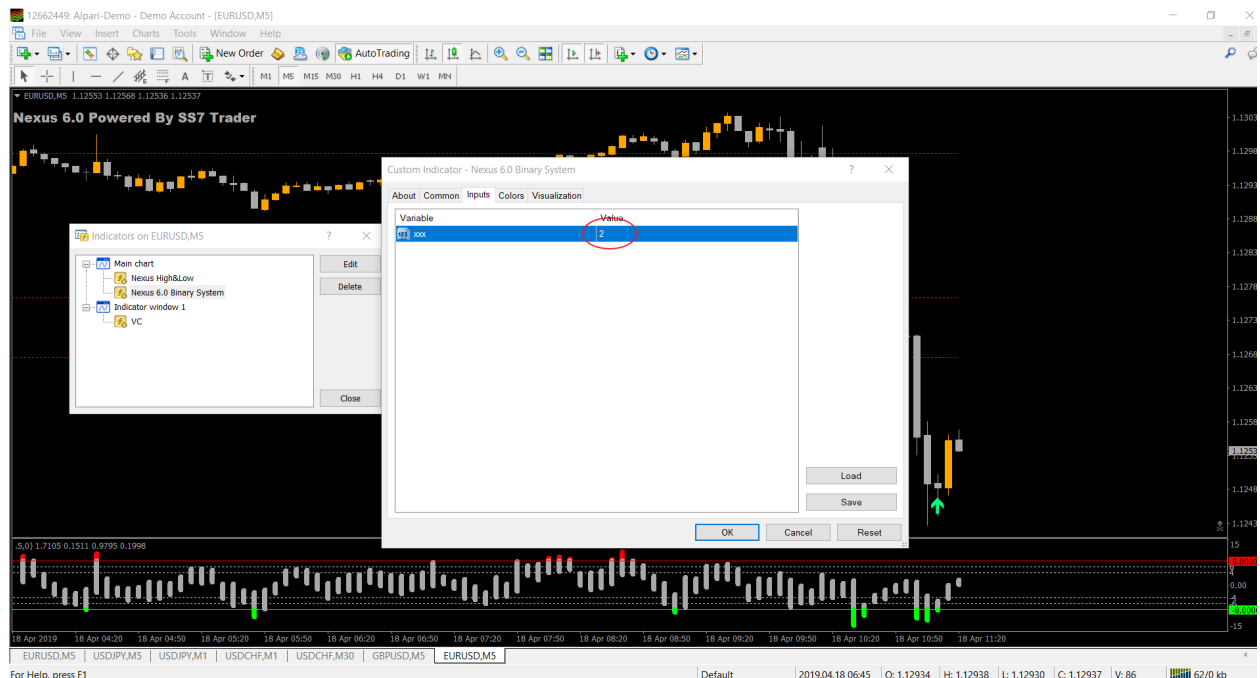
# NAXUS 6.0 INDICATOR INSTRUCTION MANUAL

## How to increase indicator accuracy

if you want to increase the indicator accuracy then right click on the graph and click on indicators then double click on “ Nexus 6.0 Binary system “ indicator and goto inputs and change the value and replace 1 to 2 like this image



# NAXUS 6.0 INDICATOR INSTRUCTION MANUAL



after this settings you will see the accuracy is maximum but signals is minimum so you need to open at least 10 currency pairs then you get some signals on daily basis.

**MOST IMPORTANT**

Do not place the trades before or after 15 mins the news. Cause news can change the directions instantly and no indicator or Robot will work on news accurately.

# **NAXUS 6.0 INDICATOR INSTRUCTION MANUAL**

Cause of the abnormal behavior of the market. So that's why I really recommend you do not place trades on news timings.

You can check the news timings by visiting these sites:

 [Investing.com Economical calendar](#)

 [ForexFactory Economical calendar](#)

**GOOD LUCK.**